



## MILTECH 908

Compact, Portable Military Gigabit Ethernet Switch

Driven by rapid advancement and lower costs, Ethernet is becoming the standard for IP-based components in a wide range of military and commercial applications, including:

- Vetrionics
- Battle management systems (BMSs)
- Airborne systems
- Land vehicles
- Mobile equipment fielded in harsh environments

Modern platforms often need Ethernet switches to connect computers, sensors, targeting systems and other devices that make these mobile platforms highly effective.

The MILTECH908 is a military-grade managed network switch offering 8 triple-speed (10/100/1000Mbps) ports with D38999 circular connectors. Its gigabit speeds and 24VDC power make it instantly compatible with network device and power systems.

The MILTECH908 is widely used in battlefield communications C4ISR, video, and sensor data acquisition, and transmission. Its mechanical packaging enhancements are designed for MIL-STD-810F airborne and ground environmental compliance and high reliability. Leveraging best-in-class switching technology, the MILTECH908 serves as a robust commercial off-the-shelf (COTS) solution for rugged LAN connectivity.



### SPECIFICATIONS

ETHERNET PORTS:	<ul style="list-style-type: none"> <li>• 8 x switched 10/100/1000 Ethernet ports</li> </ul>
NETWORKING:	<ul style="list-style-type: none"> <li>• Spanning Tree (802.1d), RSTP (802.1w) and multiple Spanning Tree (802.1S) for fast recovery rings</li> <li>• Security via Radius Authentication 802.1x, Port Security, Port Mirroring</li> <li>• Multicasting (IGMP Snooping), GARP, GMRP, and GVRP Broadcasting and flooding Control up to 8K Groups</li> <li>• 802.1q Tagged based VLAN up to 4K VLAN groups</li> <li>• QoS Multi-Layer Classifier, 802.1p, ToS/DSCP traffic classification. WFQ, Strict Queuing</li> <li>• Bridge support for Q-in-Q</li> <li>• Link Aggregation 802.3AD</li> <li>• L3 static routing</li> <li>• WEB, CLI, Telnet Management</li> <li>• Rmirror</li> <li>• Port Protection: 1+1 port protection, 1:1 port protection, 1:N port protection</li> <li>• G.8032 ring protection</li> <li>• DHCP option 82 relay</li> <li>• L2CP tunneling</li> <li>• Protocol-based VLAN</li> <li>• 1588v2 PTP with two-step clock</li> </ul>

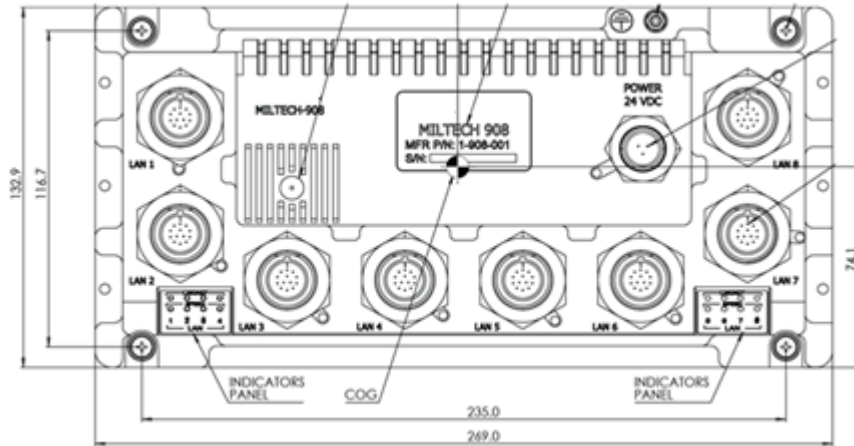


## SPECIFICATIONS

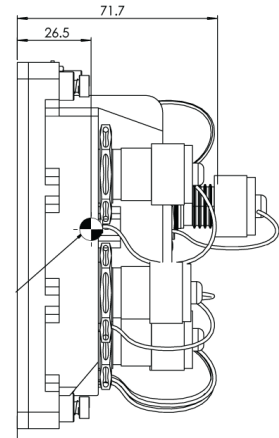
CONNECTORS:	<ul style="list-style-type: none"> <li>Power Connector Type: MIL-D-38999/24WA98PA</li> <li>LAN Connector Type: MIL-D-38999/24WB35SN</li> <li>LED Indication Per Port (Speed, Link/Activity)</li> </ul>
CHASSIS:	<ul style="list-style-type: none"> <li>Machined rugged aluminum</li> <li>Conductively cooled w/custom internal heat-sinks</li> <li>Ingress protection against sand, dust and moisture</li> </ul>
PERFORMANCE:	<ul style="list-style-type: none"> <li>26.8 Mpps wire speed forwarding rate</li> <li>20Gbps maximum forwarding bandwidth</li> <li>8K MAC Address</li> </ul>
STANDARDS COMPLIANCE:	<ul style="list-style-type: none"> <li>IEEE 802.1x MAC based Authentication</li> <li>IEEE 802.1Q Vlan Tagging</li> <li>IEEE 802.1P QoS</li> <li>IEEE 802.1S Multiple STP</li> <li>IEEE 802.1W Rapid STP</li> <li>IEEE 802.1AD Link Aggregation</li> <li>IEEE 802.1X</li> </ul>
POWER:	<ul style="list-style-type: none"> <li>Design to meet MIL-STD-1275 . Contact us for available reports.</li> <li>Design to meet MIL-STD-704 (no damage, surge and spikes protection)</li> <li>Voltage Input: 24Vdc Nominal (18-32V)</li> <li>Power Consumption: 7W Typical</li> <li>Chassis grounding</li> </ul>
ELECTROMAGNETIC:	<ul style="list-style-type: none"> <li>Design to meet MIL-STD-461C/E/F. Contact us for available reports</li> </ul>
ENVIRONMENTAL:	<ul style="list-style-type: none"> <li>MIL-STD-810F/G. Contact us for available reports</li> <li>IP67. Contact us for available reports</li> </ul>
PHYSICAL:	<ul style="list-style-type: none"> <li>Dimensions: 269mm (L) x 132.9mm (W) x 71.7mm (H), including connectors. Weight: 1.5kg</li> <li>Dimensions: 10.6" (L) x 5.2"(W) x 2.8"(H), including connectors. Weight: 1.5kg</li> </ul>
INSTALLATION:	<ul style="list-style-type: none"> <li>4 x CAPTIVE SCREW #10-32 (PEM- PFC2P-032-94)</li> </ul>
COOLING:	<ul style="list-style-type: none"> <li>No Moving Parts. Passive Cooling</li> </ul>
OPERATING TEMP:	<ul style="list-style-type: none"> <li>-45°C to +85°C (-49°F to +185°F). Cold Start-Up</li> </ul>
STORAGE TEMP:	<ul style="list-style-type: none"> <li>-45°C to +85°C (-49°F to +185°F)</li> </ul>



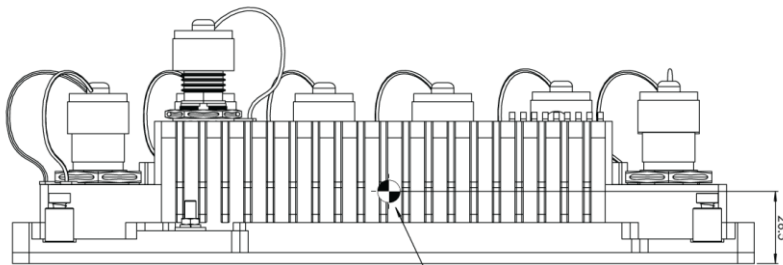
**A**



**B**



**C**



## ORDERING INFORMATION

PART NUMBER	DESCRIPTION
1-908-101	Enhanced Managed Military Grade Gigabit Ethernet Switch, 8 x 10/100/1000TX
2-CBL908LAN	LAN harness for single LAN ports, 1 x D38999 connector to 1 x RJ45 connector, 3 meters length
2-CBL908LAN+	LAN and management harness for single LAN ports, 1 x D38999 connector to 1 x RJ45 connector and 1x DB9 connector, 3 meters length
2-CBL908PWR3M	Power harness 1 x D38999 to open wires 3-meter length