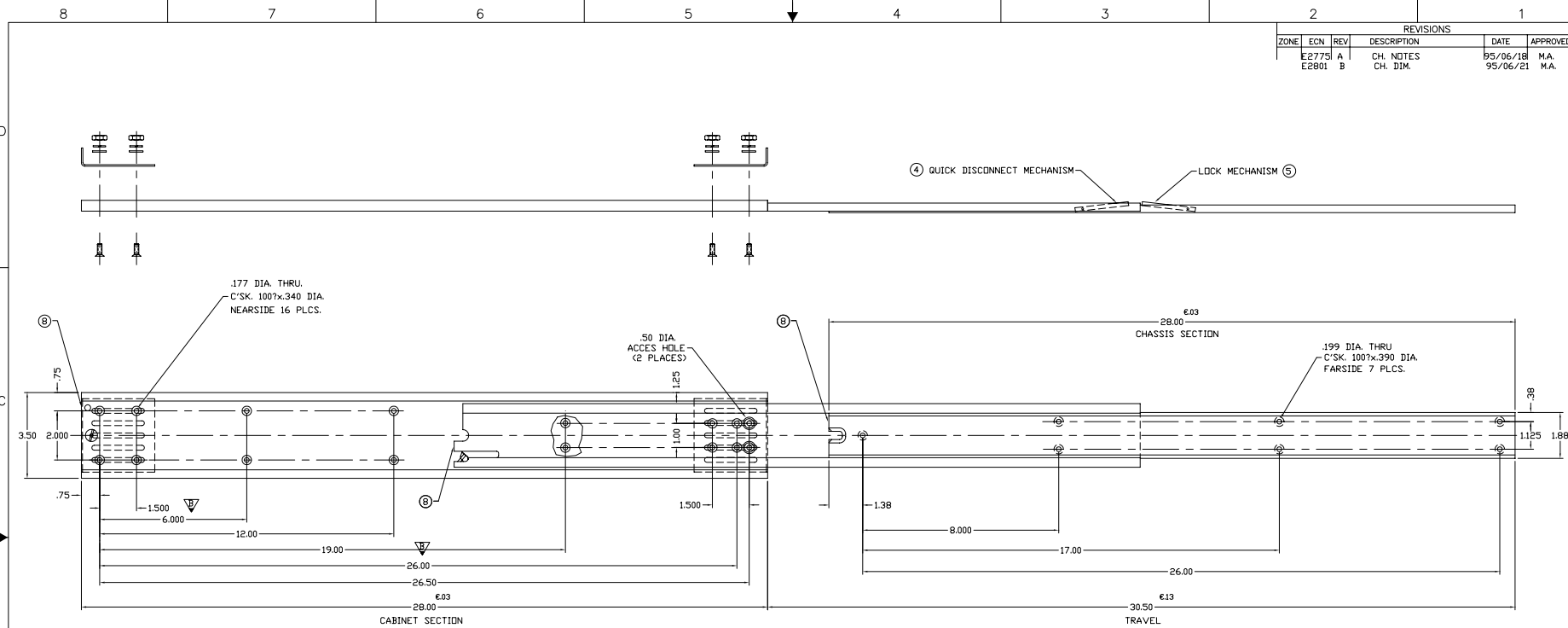
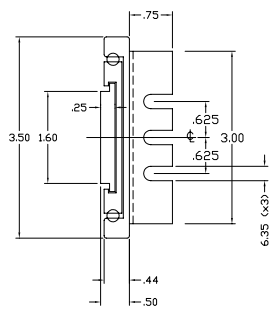


REVISIONS					
ZONE	EON	REV	DESCRIPTION	DATE	APPROVED
E2775	A		CH. NOTES	95/06/18	M.A.
E2801	B		CH. DIM.	95/06/21	M.A.



- ① BREAK SHARP EDGES.
- ② MATERIAL: CHANNELS & TRACK - ALUM. ALY. 6061-T6 PER QQ-A-200/11
BALL BEARINGS - CRES; 440, RACEWAYS - CRES; 302 PER QQ-S-766
ALL OTHER PARTS - CRES; TYPE 302 DR 303 PER QQ-S-763 DR QQ-S-764
- ③ PROTECTIVE FINISH: CABINET SECTION MEMBERS - ANODIZED PER MIL-A-8625 TYPE II CLASS I
CHASSIS SECTION - ANODIZED PER MIL-A-8625 TYPE II, CLASS I.
STAINLESS STEEL PARTS - PASSIVATED PER MIL-S-5002
- ④ QUICK DISCONNECT MECHANISM. TO DISENGAGE DRAWER FROM CABINET - PUSH LOCKER AS SHOWN. DRAWER IS AUTOMATICALLY LOCKED IN PLACE WHEN REINSTALLED.
- ⑤ LOCK MECHANISM. SLIDE IS STOPPED AND AUTOMATICALLY LOCKED WHEN FULLY EXTENDED TO RETRACT SLIDE - PUSH ON LOCKBAR
- ⑥ MARKING: 1) "MPSI 0B7R6" AND P/N: CABINET SECTION LH: "P/N M350172-011"
RH: "P/N M350172-012"
CHASSIS SECTION LH: "P/N M350172-021"
RH: "P/N M350172-022"
RETMA BRACKETS "M350173-003"
- 2) MFG CAGE CODE AND P/N:
- ⑦ UNLESS OTHERWISE SPECIFIED IN THE APPLICABLE P.D. THE SLIDES WILL BE SUPPLIED WITH RETMA BRACKETS KIT (UNASSEMBLED)
- ⑧ THESE SURFACES TO BE IN LINE WHEN SLIDE IS IN RETRACTED POSITION.
- ⑨ CABINET SECTION AND CHASSIS SECTION ASSY. MAY BE ORDERED SEPARATELY AND ARE INTERCHANGABLE
- ⑩ LOAD CAPABILITY 200 LB. PER PAIR.



SIDE VIEW
SCALE: 1:1

PART NO.	NEXT REV.	FINAL REV.	NEXT APP.	USED ON APPLICATION	UNLESS OTHERWISE SPECIFIED DIMENSIONS ARE IN INCHES UNLESS NOTED OTHERWISE DIMENSIONS IN MILLIMETERS ARE IN PARENTHESES DIMENSIONS IN PARENTHESES ARE TO BE USED UNLESS NOTED OTHERWISE	CONTRACT NO.	APPROVALS	DATE	TITLE
	REV. NO.	REV. DATE	REV. DATE	REV. DATE					
					✓ SURFACE ROUGHNESS PER		D.B.	18/05/21	SLIDE OUTLINE DIM.
							M.A.	21/05/95	D10B7R6
							A.Y.	21/05/95	M350172 B
								SCALE 1:2	

COMPUTER GENERATED
DO NOT MANUALLY ALTER