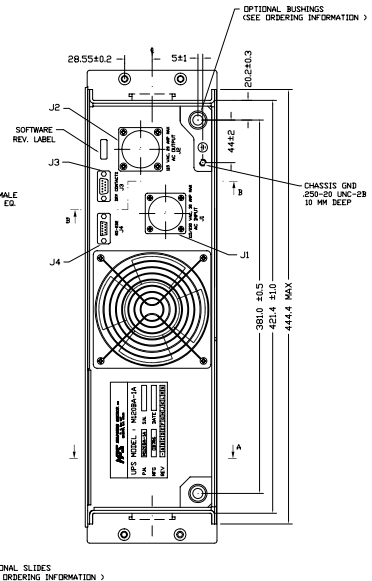
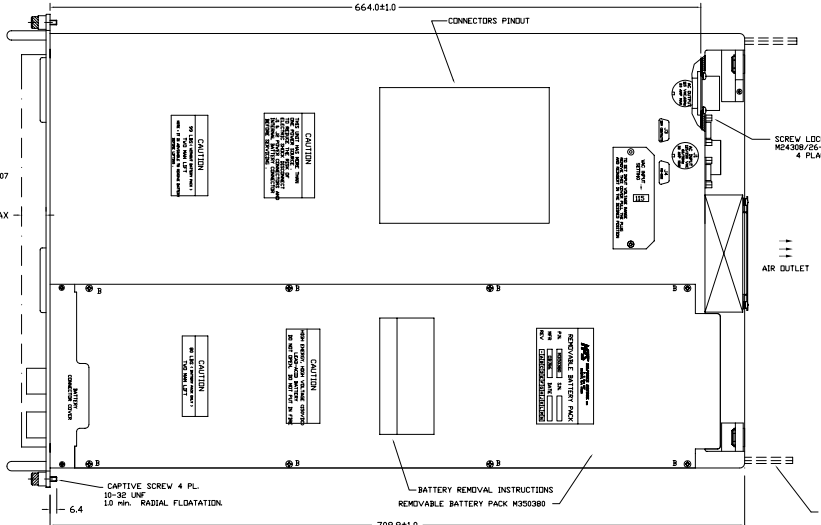
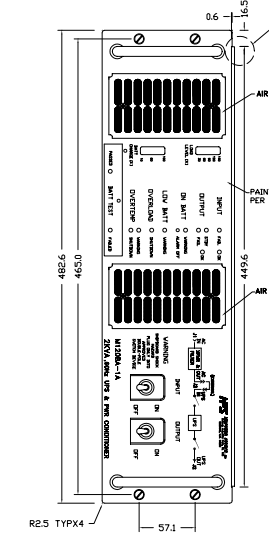
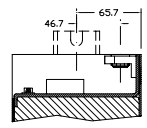
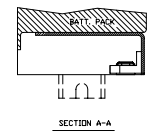
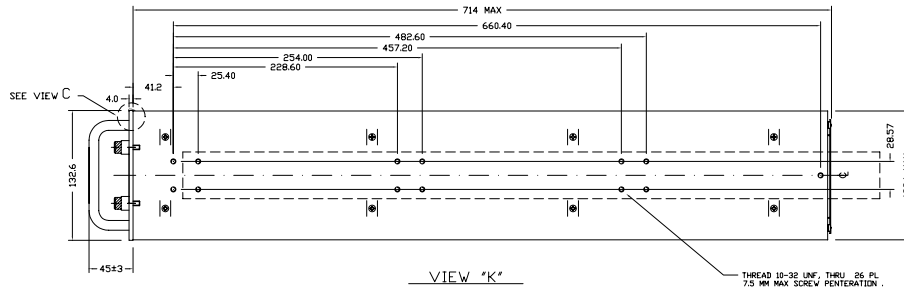


J3 M2400A-24-13 OR COMP. (UP)		J4 M2400A-24-13 OR COMP. (DS)	
WIR. NO.	FUNCTION	WIR. NO.	FUNCTION
1	FAULT DETECT SIGNAL LOW	1	SEE NOTE (1)
2	FAULT DETECT SIGNAL HI	2	RD
3	REMOTE SHUTDOWN	3	TR
4	BATTERY OPERATION	4	SHR
5	SYSTEM COMMON GND (1)	5	BS
6	NC	6	BR
7	BATT VOLTAGE LOW	7	RTS
8	UPS ON	8	CTS
9	BATTERY OPERATION (2)	9	SEE NOTE (2)

J1 M2300A-23-2R OR COMP.		J2 M2300A-24-1SS OR COMP.	
WIR. NO.	FUNCTION	WIR. NO.	FUNCTION
A	CHASSIS GND	A	UPS OUT 1
B	POWER CONDITIONER CD INPUT PHASE 1	B	UPS OUT 2
C	POWER CONDITIONER CD INPUT PHASE 2	C	UPS IN 1
D	POWER CONDITIONER CD OUT 1	D	UPS IN 2
E	UPS IN 1	E	CHASSIS GND
F	CHASSIS GND		

- NOTES:
- (1) PIN 5 OF J3 IS INTERNALLY SHORTED TO PIN 1 OF J4
 - (2) PIN 9 OF J3 IS INTERNALLY SHORTED TO PIN 9 OF J4
 - (3) POWER CONDITIONER IS THE XFMR & FILTER MODULE

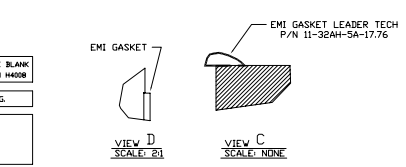
REVISIONS					
ZONE	ECN	REV	DESCRIPTION	DATE	APPROVED
		C		95.06.20	E.S.
	E3068	C	TEXT CHANGED	05.08.25	N.A.
	H4166	D	ECO. INC.	03.05.12	A.Y.



ORDERING INFORMATION:

M120BA-1A -0 -1 -0 -X

BASIC PART NO.	SPECIAL OPTIONS, LEAVE BLANK 1: CUSTOMER REQUEST, ECD H4008
OPTIONAL SLIDES 0: NONE 1: WITH CHASSIS/CABINET SLIDE SET P/N M350172	STANDARD DRY CONTACT CONFIG.
OPTIONAL BUSHINGS 0: NONE 1: WITH CHASSIS/CABINET BUSHING SET P/N M350173	



UNLESS OTHERWISE SPECIFIED DIMENSIONS ARE IN MILLIMETERS (INCHES) DO NOT SCALE DRAWING	CONTRACT NO.	DATE	SCALE
1/2" SURFACE FINISHES FOR FINISHES - C PER MIL-C-2624 CL 1A	APPROVALS	DATE	SCALE
	DESIGNED BY: SLELL	DATE: 05.03.95	SCALE: 1:2
	CHECKED BY: SLELL	DATE: 05.03.95	
	APPROVED BY: YAWNER	DATE: 05.03.95	

MPS MILLPOWER SOURCE, INC.
1000 W. 10TH ST.
MILWAUKEE, WI 53220

M120BA-1A S.C.D.
JOB#7R6 M3500Q110