

M164 SERIES

**MINIATURE, HIGH DENSITY,
HIGH POWER FACTOR,
1000W, SINGLE OUTPUT
AC/DC CONVERTERS**



APPLICATIONS

Military, Ruggedized, Telecom, Industrial

SPECIAL FEATURES

- Miniature size
- High efficiency
- Wide input range
- High power factor (0.99)
- Input / Output isolation
- Fixed switching frequency (250 KHz)
- External synchronization capability
- EMI/RFI filters included
- Indefinite short circuit protection with auto-recovery
- Over-voltage shutdown with auto-recovery
- Over temperature shutdown with auto-recovery

ENVIRONMENTAL

Meets or exceeds MIL-STD-810D

Temperature:

Operating -40C to +85°C (baseplate)

Storage -55C to +125°C

RELIABILITY

150,000 hours, calculated per MIL-STD-217F at +85°C baseplate, ground fixed.

ELECTRICAL SPECIFICATIONS

AC INPUT

AC Input range: 85 to 265 VAC L-N, 50/60/400 Hz, Single Phase

Efficiency: 85%, Typical

EMI/RFI:

Design to meet to exceed MIL-STD-461D
CE101, CE102, CS101, CS114, CS115,
CS116, RE101, RE102, RS101, RS103

Isolation:

1500V between Input and Output

1500V between Input and Case

DC OUTPUT (floating)

Line/Load regulation:

Less than $\pm 1\%$ (no load to full load, -40°C to +85°C)

Ripple and Noise: 100÷150mVp-p, typical (max. 1%)

Current limiting (Hiccup):

Continuous protection for unlimited time

Electronic over voltage protection.

Passive tranzorb on outputs.

Under voltage protection (Hiccup).

Over temperature protection:

Shutdown at baseplate temperature of +105°C ($\pm 5^\circ\text{C}$)

Automatic recovery at baseplate temperature

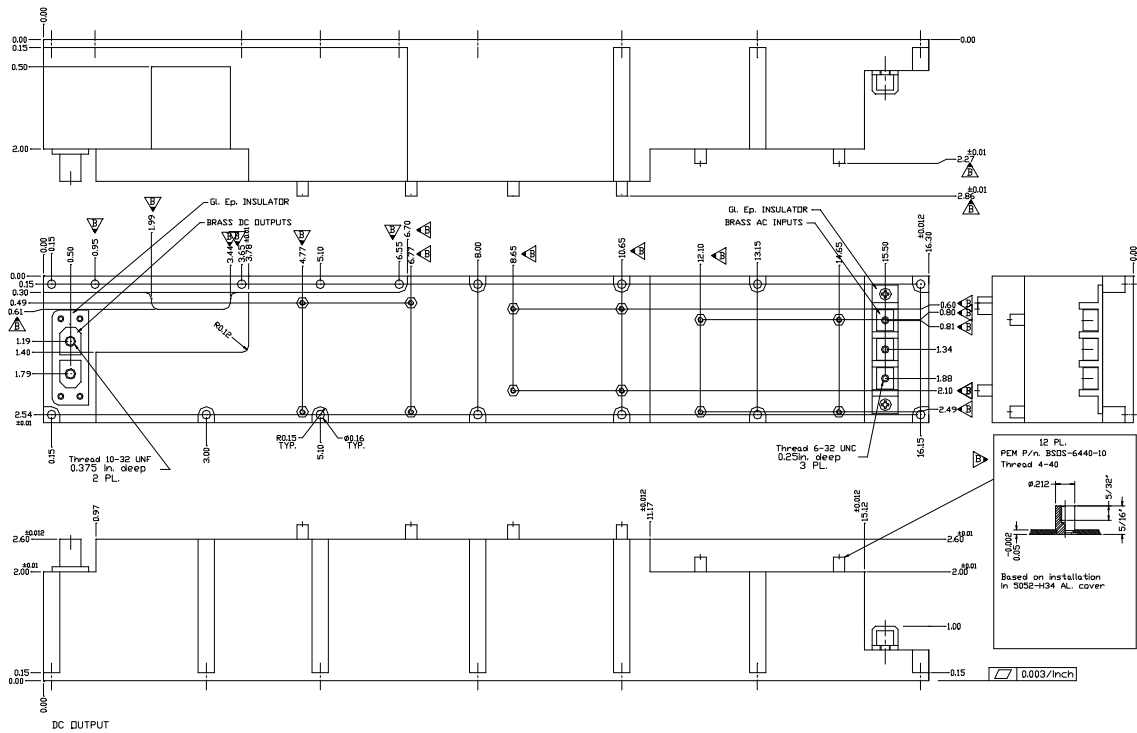
lower than +95°C ($\pm 5^\circ\text{C}$)

Isolation:

1500V between Output and Input

200V between Output and Case

OUTLINE DRAWING



Notes

1. Dimensions are in Inches [mm]
2. Tolerance is:
.XX ±.02 IN
.XXX ±.01 IN
3. Weight: Approx. 5.0 Lb (2250 gr)

* Specifications are subject to change without prior notice by the manufacturer